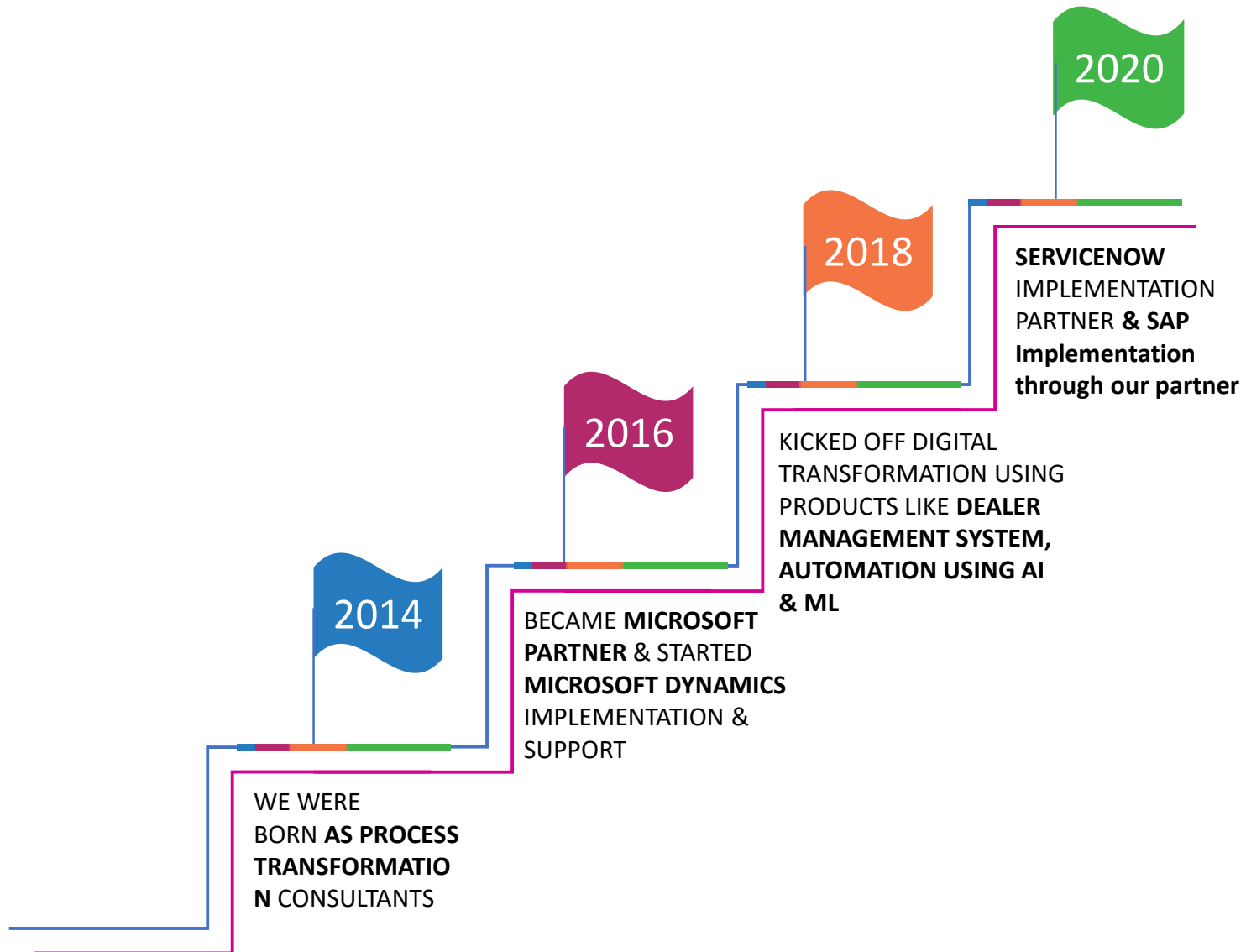


# BAFFLESOL COMPANY OVERVIEW





## HOW WE GREW OUR PORTFOLIO

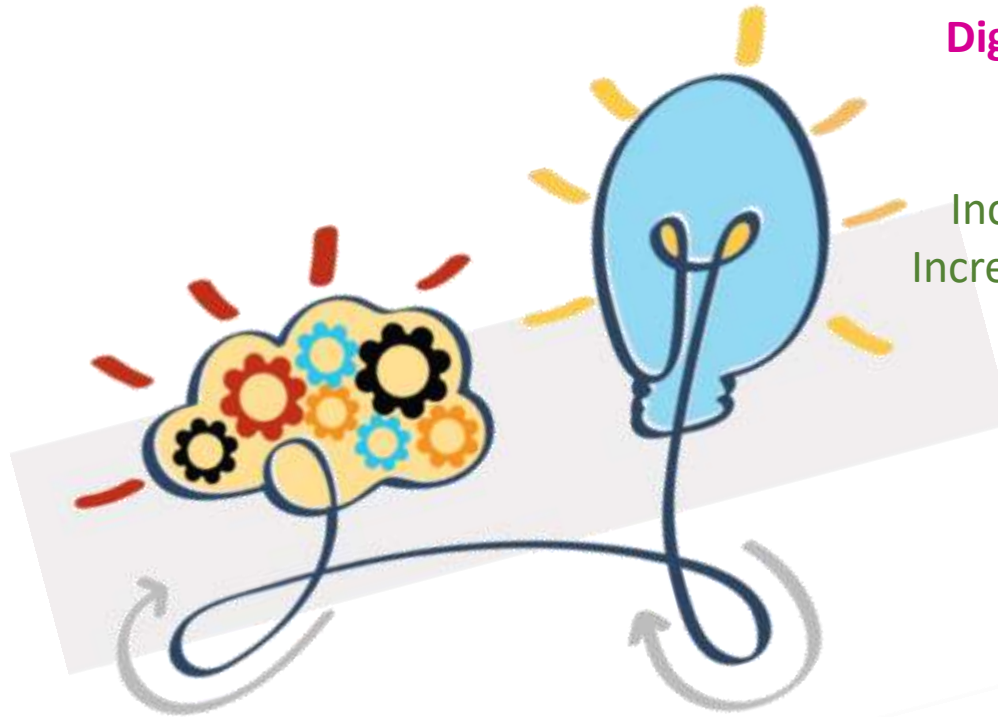


01

## Digital Transformation

### *BENEFITS:*

Increased productivity  
Increased revenue by 15%



### Archaic or Inefficient Systems

Digitization and automation has  
been proven to benefit  
customer/employee satisfaction  
& better compliances

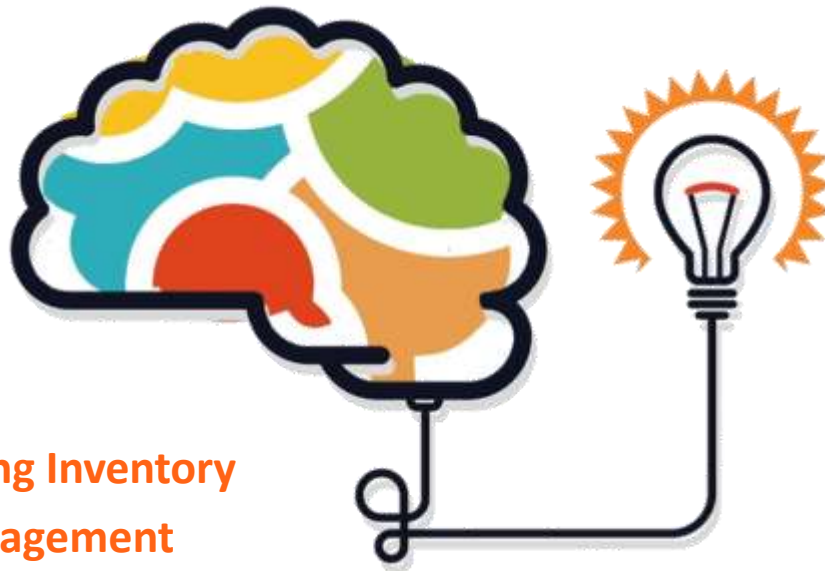


## 02

### ERP, Distribution Management Systems

#### *BENEFITS:*

Inventory in tune with Sales  
Minimizing waste and losses  
Increased revenue by 30%



#### **Suffering Inventory Management**

Inventory is not streamlined and has become hindrance to grow sales. There is a risk of miscalculated customer demand & stock availability

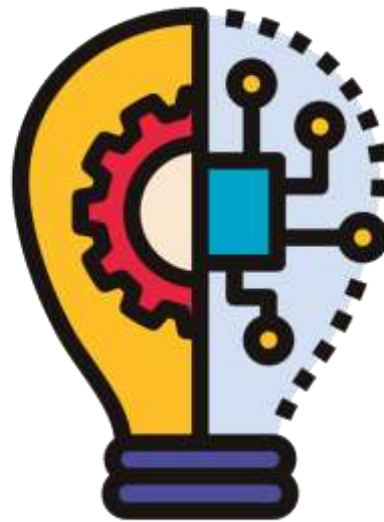


## 03

### Customer Relationship Management Systems

#### *BENEFITS:*

Centralized database  
Better marketing, sales and  
loyalty programs  
Easy Sales reports



#### Unhappy Customers

You can't meet customer expectations well on time and your team is not well equipped to meet their demands!



## 04

### Microsoft ERP solutions

#### *BENEFITS:*

- Flexible system
- Keep up with demand
- Prevent Idle time
- Reduce Scheduling error
- Increase in revenue by 30%



### Production Scheduling

Production scheduling & manufacturing ability is not in sync, resulting in wastage of both inventory and finances





05

**Custom developed Interface  
like Finance, HR, Payroll, Operations**

*BENEFITS:*

Better coordination between systems  
Quick turnaround time  
Happy internal and external customers  
Increase in revenue by 30%



**Disconnected Systems**

Accounting software isn't compatible with your old HR system, and time and resources are wasted trying to stitch them together



## 06

### AI and ML dashboards

#### *BENEFITS:*

- Better coordination between systems
- Quick turnaround time
- Better resolutions
- Happy internal and external customers



#### **Neglected Business Analysis**

Team struggle to gather data and centralize it to showcase business health in a single repository to make informed business decisions



## 07

### Microsoft/SAP ERP

#### *BENEFITS:*

- Better coordination between teams
- Accurate budgeting
- Visibility on cost
- Detailed view of deliverables

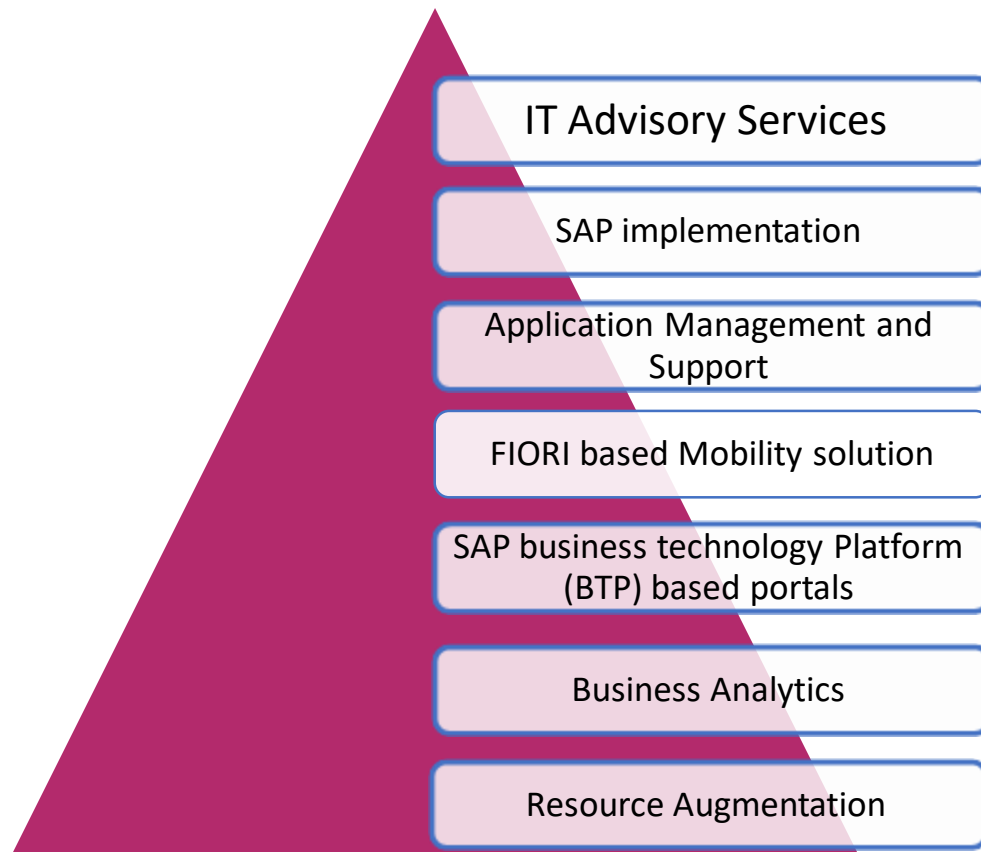


#### **Poor Project Accounting**

Team struggle to operate with in budgets, no visibility on cost, and clarity on value delivered



With our Solutions, We strive to be your one-stop partner for your varied IT needs



System effectiveness, audit and improvements

Migration from On-prem to cloud model

New module implementation and configuration

Enhancement Package Upgrade. E.g.: Upgrade to EHP7 for GST implementation

Platform Migration Like SAP HANA

Technical and Functional migration to SAP S4HANA enterprise management

Migration BW to SAP HANA platform



SAP portfolio of Products and Solutions, that covers most of the industry verticals and business processes

SAP Cloud Based  
Customer Portal

SAP Cloud Based  
Supplier Portal

SAP Cloud Based  
Sales Force  
Portal

Service  
Management  
Solution

SAP Mobile  
Industry Solution

SAP in Wholesale  
Distribution  
Solution

FIORI Based  
Mobility Solution

Process  
Automations in  
SAP

Manufacturing  
Execution  
Solution

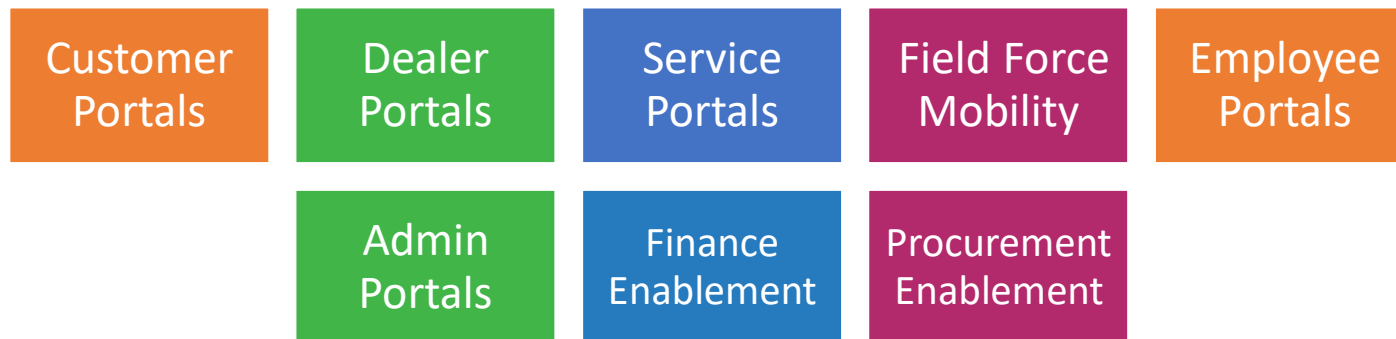
SAP and Bank  
Integrations



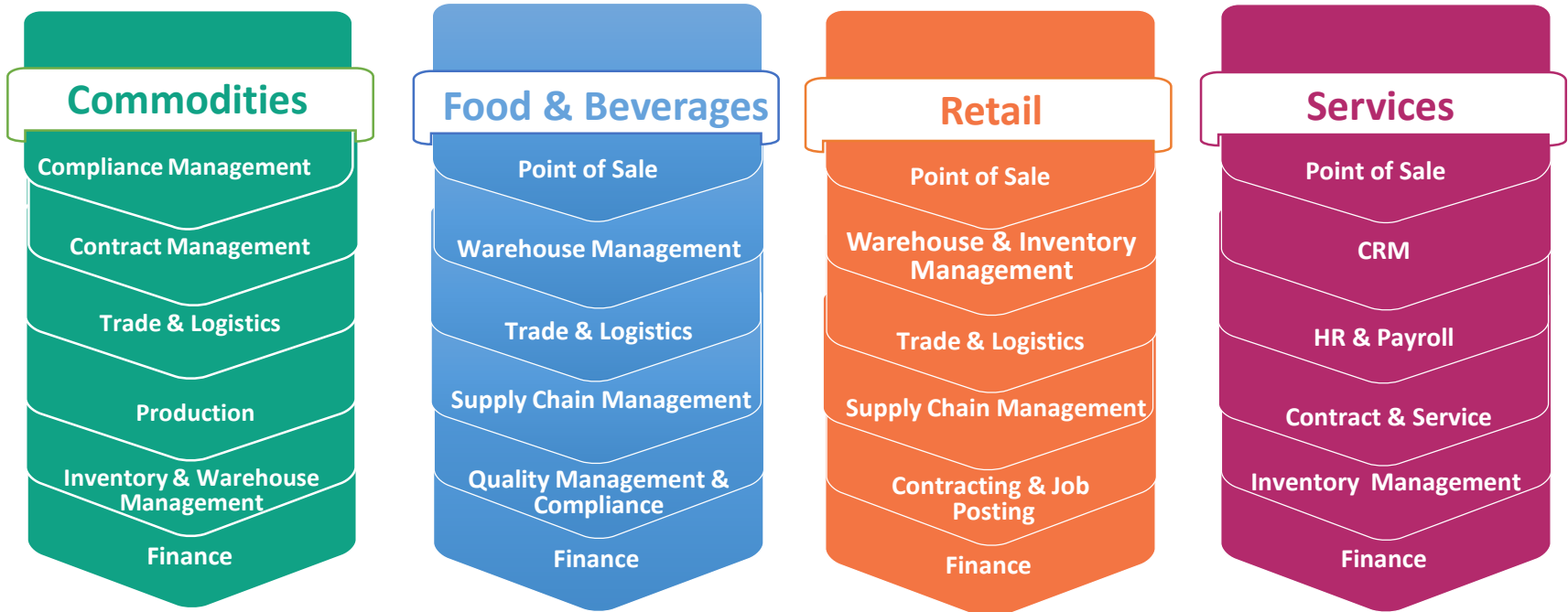
You benefit from our in-depth application and various industry domain experience



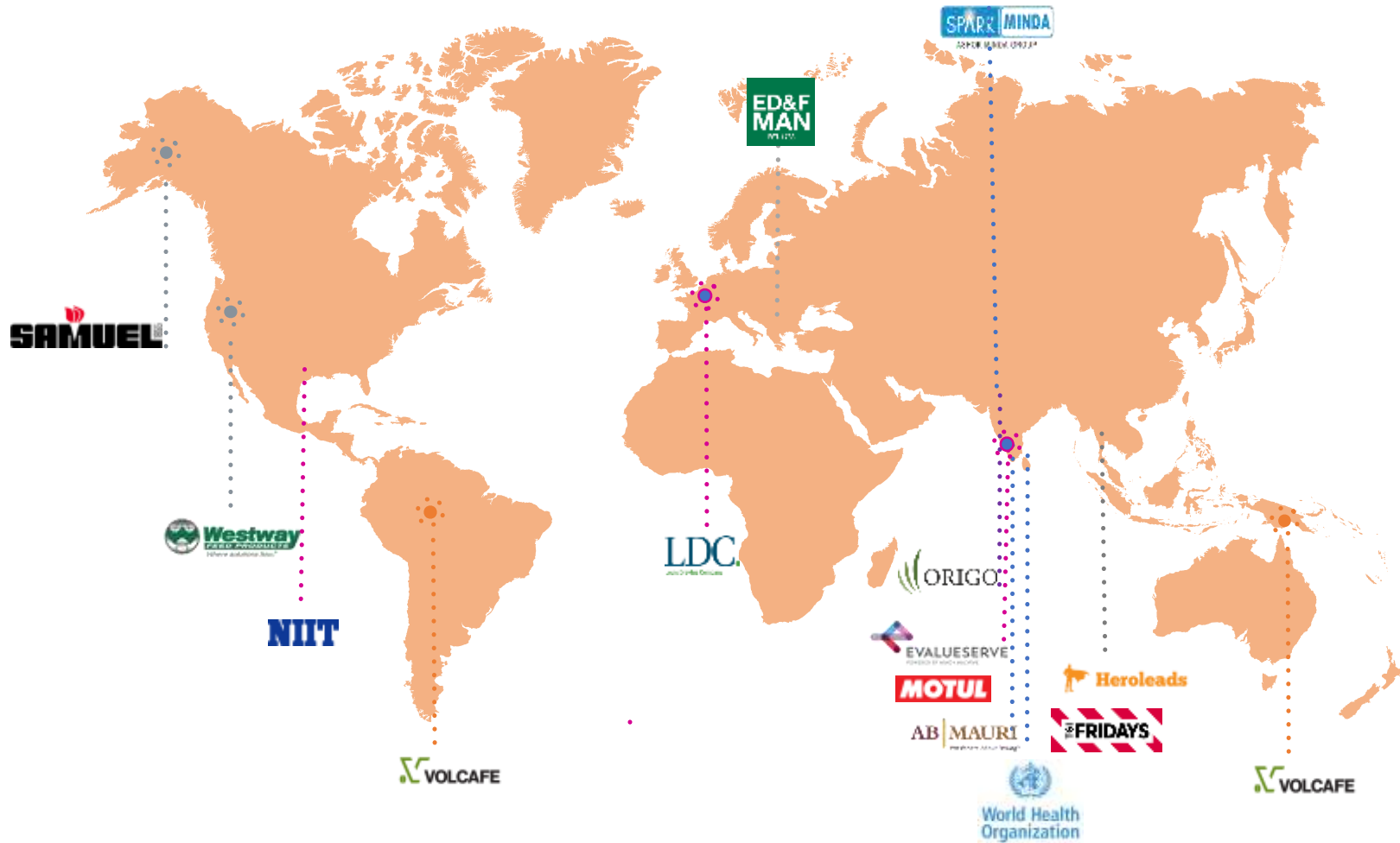
All these are linked to SAP ECC6.0, S/4HANA or any third-party solution in real-time through API interfaces.



We have added value across a multitude of industries, including:



## OUR CLIENTS



“Going above and beyond involves making customers “feel special” and helping them out even when it may not make sense.” ~ *Neil Patel*



Our **constant certification and training** has created a culture of **continuous improvement**, and making sure teams adhere to **processes**



Dynamics | Office |  
Azure



Certified Microsoft  
Professionals



MÉTHODOLOGIE

Certified Sure Step  
Professionals



Certified DevOps  
Professionals



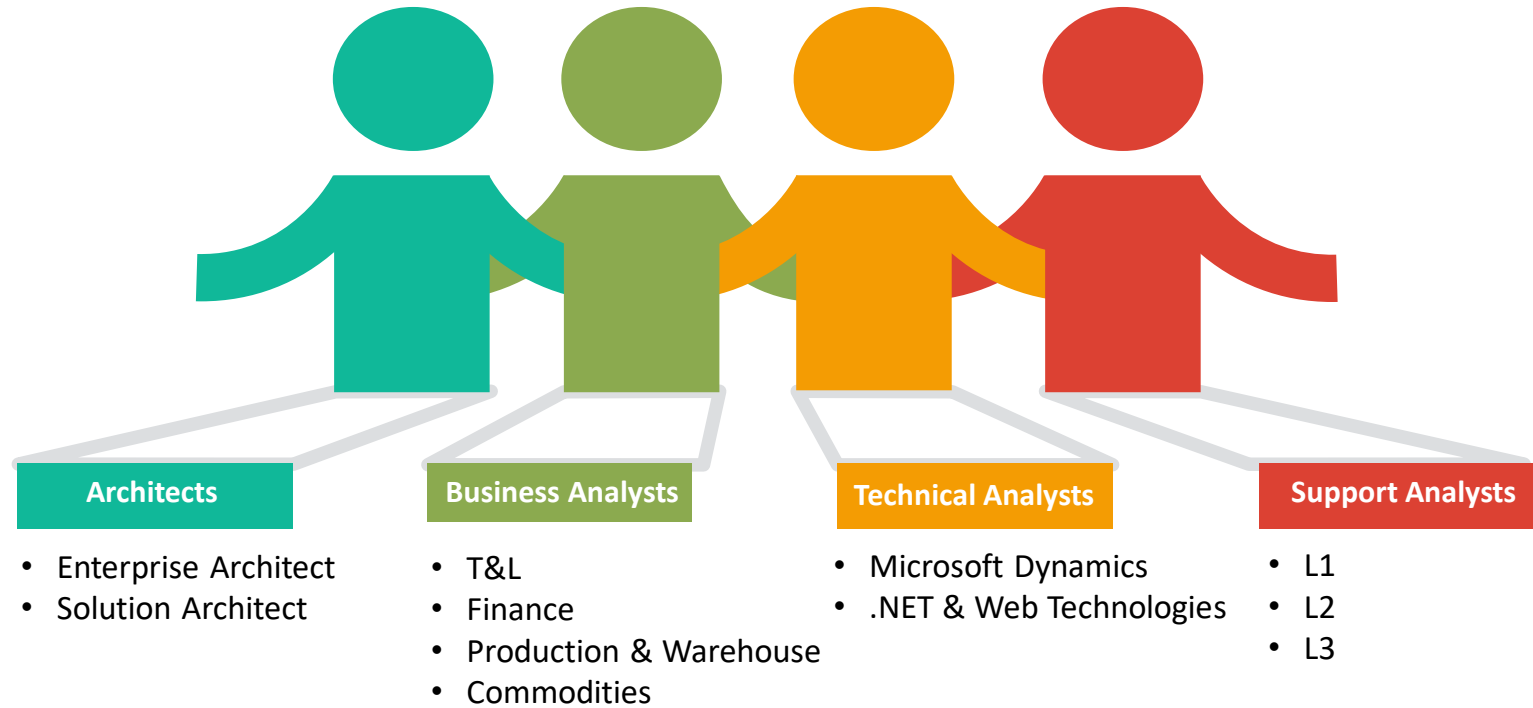
Certified SAFe  
Practitioner



**LeanKanban**  
UNIVERSITY

Certified Kanban  
Practitioner





EXPERIENCE
<ul style="list-style-type: none"> <li>1 – 2yrs as Entry Level</li> <li>2-4yrs as Associates</li> <li>5-7yrs as Lead</li> <li>7-10yrs as Managers</li> <li>10 + as Architect</li> </ul>

SKILL SET
<ul style="list-style-type: none"> <li>Dynamics 365 (FO,BC,CRM)</li> <li>Power BI</li> <li>SSRS</li> <li>Dot Net</li> <li>Infra</li> </ul>

EDUCATION
<ul style="list-style-type: none"> <li>Graduates</li> <li>Post-Graduates</li> <li>Finance</li> </ul>





Thank You!

 Email/ [siddharth.sharma@bafflesol.com](mailto:siddharth.sharma@bafflesol.com)

 Facebook/ [BaffleSol](https://www.facebook.com/BaffleSol)

 Website/ [www.bafflesol.com](http://www.bafflesol.com)

 Twitter/ [@bafflesol](https://twitter.com/bafflesol)

